



## COMMUNICATIONS

**Integration:** A state-of-the-art switching matrix integrates communications from multiple interfaces such as P25, TETRA, MPT-1327, analog radio, GSM and telephone lines (PABX or PSTN). The switching matrix allows a high degree of customization to interface with proprietary legacy trunked systems. All communications can be integrated manually by the control center operator or automatically by the switching matrix.

**Communications control:** Easy and intuitive call management allows creation of conference groups, call diversion, automatic call distribution, interconnection of different radio networks, receiving/transmitting data messages and status supervision of all communications.

**Recording:** Optional communications recording includes operators. The recordings can be played back from the same communications module or through a web front end.

## LOCATION

**Location map:** A GIS graphic interface displays all required information on the screen: all radio resources, points of interest, alarms and incident reports are represented over raster and/or vector cartography. Operators can easily change resource status, make calls or send messages directly over the map.

**Resources positioning:** Control center operators can configure the system via radio, to manually advise radio resources to send their position or to automatically transmit it via GPS (by time, distance, or both). Positions are updated automatically when received.

**Functionalities:** Operators have complete control of map information to zoom in/out, measure distance, manage exclusion zones, locate radio resources in an area, search for addresses, receive and process alarms, track resources and consult the GPS position database.

## SERVICES

**Incident management:** Automatic fill-in forms track all active services assigned to radio resources. All relevant information is automatically stored and updated in the database as the services are being processed. Closed services are available for future consultations.

**Efficiency management:** An intuitive administrator module allows the network manager to customize fill-in forms, operating procedures, types of resources and services. Each operator position can be assigned to different tasks to improve efficiency.

**Records management:** Statistics and reports can be generated from the database for specific resources, dates and map locations. Users can easily customize these reports.



## MAIN TECHNICAL CHARACTERISTICS

### Switching matrix

Mechanical characteristics:

- Size: 19" rack. 6U height

Electrical characteristics:

- Power supply: 110 / 220 Vac

Consumption:

- Complete configuration: 0.20 A at 220V AC
- Minimum configuration: 0.11 A at 220V AC

Electrical standards:

- ETSI EN 300 386 electromagnetic compatibility
- UNE 60950, safety of information processing equipment

Environmental characteristics:

- Operating temperature: 0°C to 55°C
- Relative humidity: 5% to 75% (non-condensing)
- Storage temperature: -40°C to 80°C

### Maximum configuration per switching matrix

- 20 operator positions
- 20 RADIO/GSM interfaces
- 10 ISDN BRI interfaces (20 communications)
- 10 analog telephony interfaces

### Cartography

- Raster or vector maps
- Customizable

### Operating system

Windows 2000, Windows XP

### Database

MySQL

### Communication system

- P25
- TETRA
- Trunking MPT-1327
- Analog radio
- GSM
- ISDN
- Analog telephony
- Line connection for PowerTrunk™ infrastructure
- Others (contact us)

### Other features

Remote connection alternatives:

- Internal PCI ISDN modem
- Internal analog PCI 56K modem
- VPN connection through xDSL

Configuration maintenance: HTML web server

Remote maintenance from factory

Remote operator positions by Ethernet

Several switching matrixes distributed through Ethernet

Application language: Spanish, English, Portuguese, Chinese. Consult us for other languages

### Operator position accessories

- Desktop microphone with PTT
- Foot-switch PTT
- Headset with cable
- Wireless headset
- Second TFT 19" monitor for operator

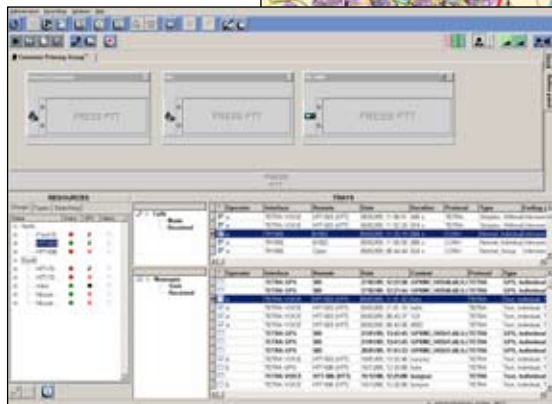
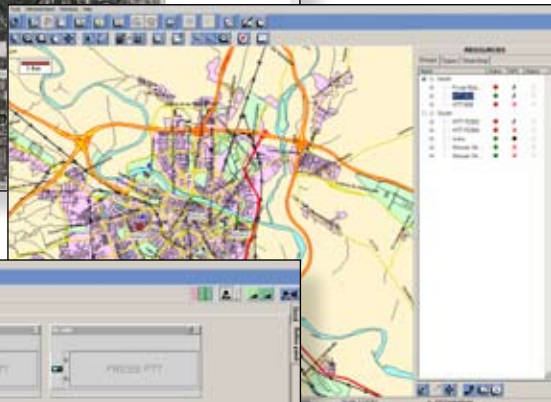
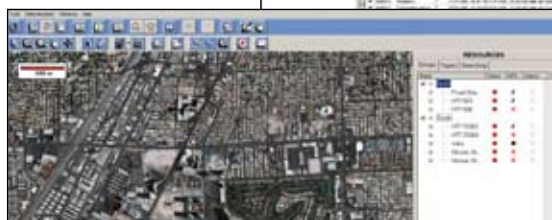
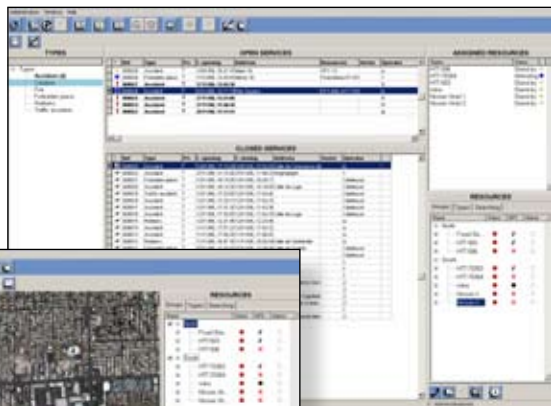
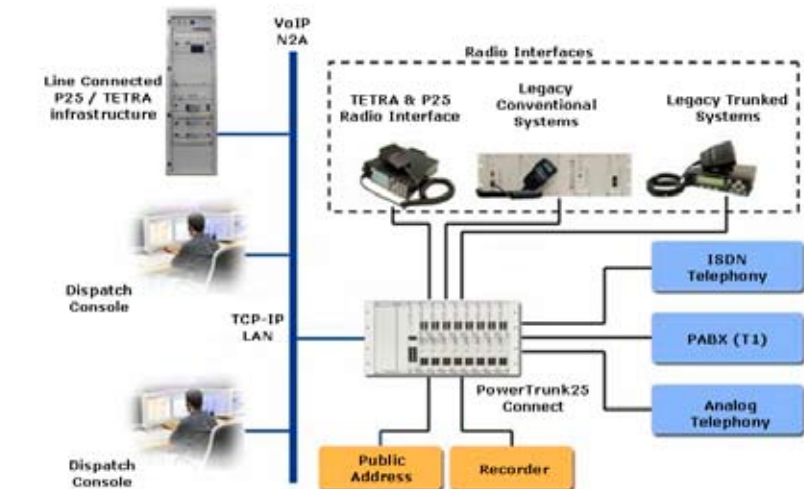
### Options

Automatic operator

- For telephone to radio with 5-tone call
- For radio with 5-tone call to telephone

Management software: reports and statistics

Redundant server



**PowerTrunk Inc.**  
750 Columbus Ave., Suite 11G  
New York, NY 10025  
212.222.4971  
info@powertrunk.net  
www.powertrunk.net  
www.teltronic.es